



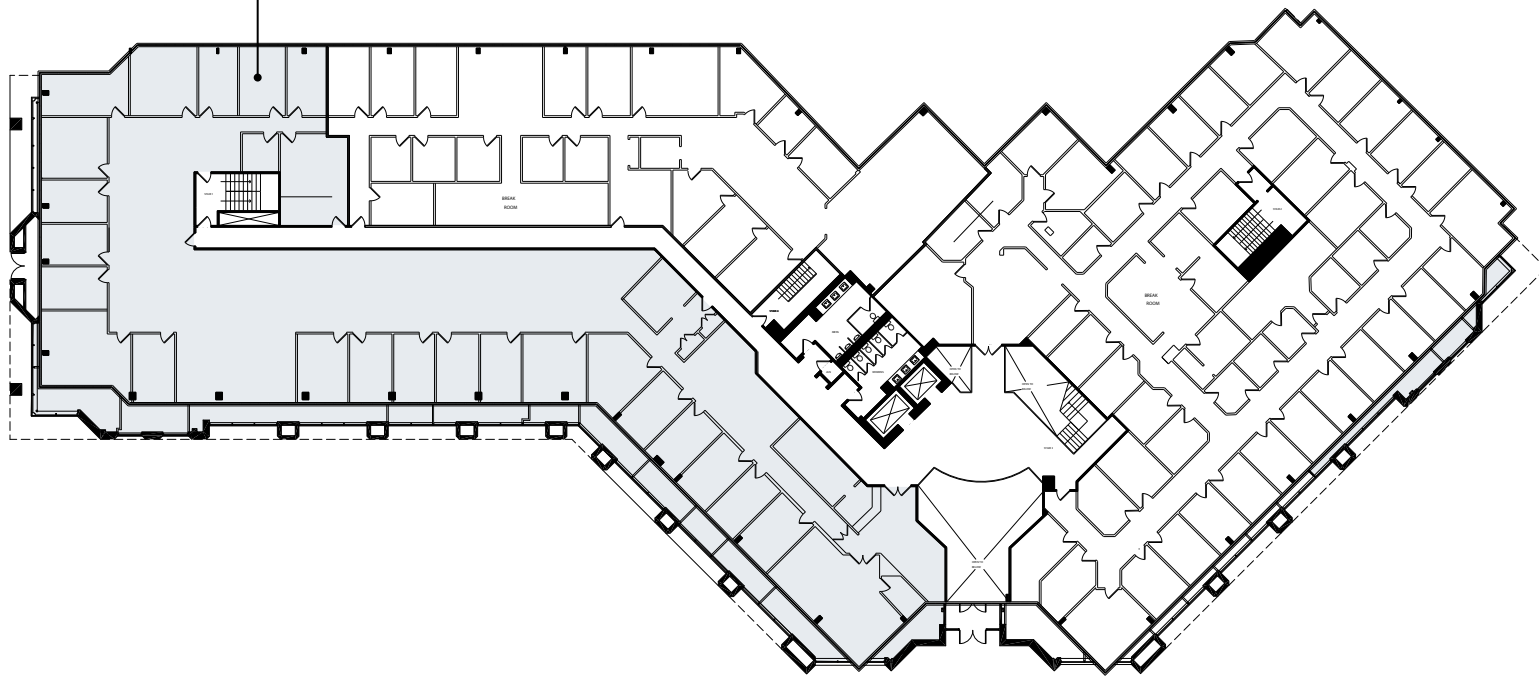
LINDEN
WOOD

Lindenwood, Malvern, PA

101 Lindenwood Drive

2nd floor plan

Suite 220
12,379 SF
(available 11/1/2022)



www.LindenwoodMalvern.com

Team
contacts

Adam Shute
+1 610 249 2272
adam.shute@jll.com

Chris Werner
+1 610 249 2265
chris.werner@jll.com

JLL | Jones Lang LaSalle Brokerage, Inc.
550 E Swedesford Road, Suite 260, Wayne, PA 19087
+1 610 249 2255

